

# ProChipper®

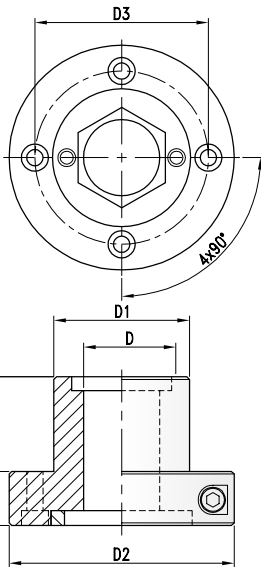


tooling systems

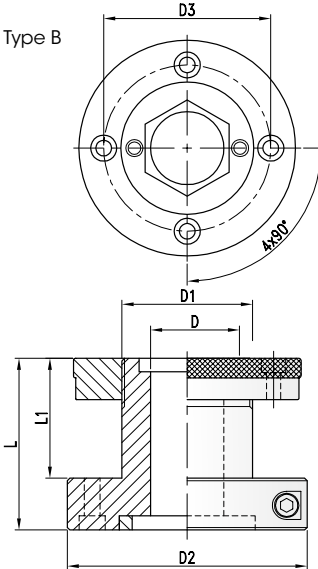


**Spannsysteme, Zubehör**  
*Clamping systems, accessoires*

Type A



Type B


**HydroGrip - Offenes Hydrodehnfutter mit Fettpumpenanschluss**  
 HydroGrip - Open hydrosleeve with connection for grease pump

D	D1	D2	D4	L	L1	Art. Nr.
<b>Type A</b>						
30	40	83	64	55	35	<b>724.101</b>
	50	83	64	55	35	<b>724.102</b>
35	50	83	64	55	35	<b>724.103</b>
	60	93	74	55	35	<b>724.105</b>
40	50	83	64	55	35	<b>724.104</b>
	60	93	74	55	35	<b>724.106</b>
45	60	93	74	55	35	<b>724.107</b>
50	60	93	74	55	35	<b>724.111</b>

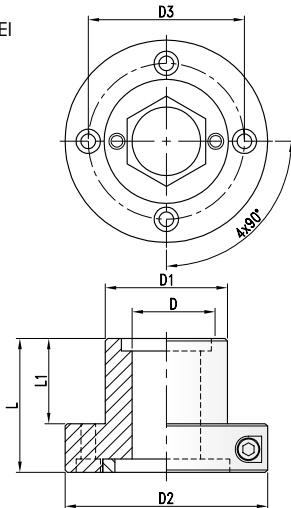
**HydroGrip - Offenes Hydrodehnfutter mit Fettpumpenanschluss**  
 HydroGrip - Open hydrosleeve with connection for grease pump

D	D1	D2	D3	D4	L	L1	L2	Art. Nr.
<b>Type B</b>								
30	50	83	83	64	75	40	55	<b>724.201</b>
35	50	83	83	64	75	40	55	<b>724.202</b>
	50	83	83	64	115	80	95	<b>724.203</b>
50	83	83	64	165	130	145		<b>724.204</b>
	60	93	90	74	75	40	55	<b>724.205</b>
60	93	90	74	115	80	95		<b>724.206</b>
	93	90	74	140	105	120		<b>724.207</b>
40	50	83	83	64	75	40	55	<b>724.211</b>
	50	83	83	64	115	80	95	<b>724.213</b>
50	83	83	64	140	105	120		<b>724.215</b>
	83	83	64	165	130	145		<b>724.216</b>
50	83	83	64	190	155	170		<b>724.217</b>
	60	93	90	64	75	40	55	<b>724.218</b>
60	93	90	74	115	80	95		<b>724.220</b>
	93	90	74	140	105	120		<b>724.221</b>
60	93	90	74	165	130	145		<b>724.224</b>
	93	90	74	215	180	195		<b>724.226</b>
45	60	93	90	74	75	40	55	<b>724.228</b>
	60	93	90	74	115	80	95	<b>724.230</b>
60	93	90	74	140	105	120		<b>724.232</b>
	93	90	74	190	155	170		<b>724.234</b>
60	93	90	74	240	205	220		<b>724.236</b>
	50	60	93	90	74	75	40	55
60	93	90	74	115	80	95		<b>724.240</b>
	93	90	74	140	105	120		<b>724.242</b>
60	93	90	74	190	155	170		<b>724.243</b>
	93	90	74	240	205	220		<b>724.245</b>

**Zubehör**  
 Attachment

	Art. Nr.	Preis €
Fettpumpe - Grease pump	<b>724.401</b>	
Fettkartusche - Grease cartridge	<b>724.402</b>	

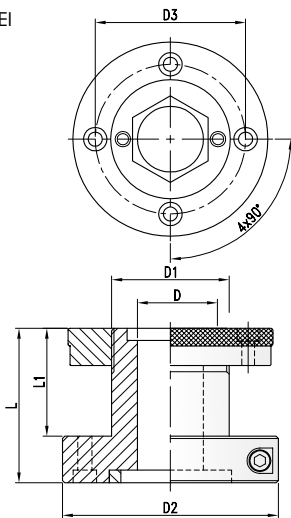
Type EI



**HydroGrip - Geschlossenes System**  
 HydroGrip - Closed System

D	D1	D2	D3	L	L1	Art. Nr.
<b>Type EI</b>						
40	60	120	100	92	68	<b>724.301</b>

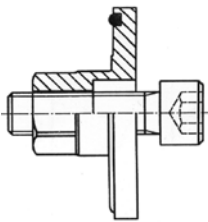
Type EI



**HydroGrip - Geschlossenes System**  
 HydroGrip - Closed System

D	D1	D2	D3	L	L1	Art. Nr.
<b>Type EI</b>						
40	60	120	100	92	68	<b>724.350</b>

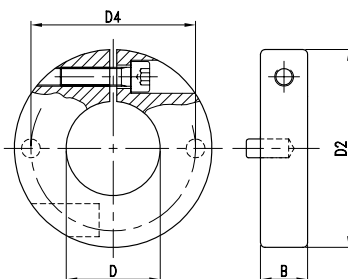
- Hydrodehnfutter mit Feingwindemutter für stufenlos verstellbare Werkzeuge.
- *Macrothreaded hydro sleeve for grooving and flooring sets.*



**Deckscheibe für Perske Motor**  
 Flange for Perske motor

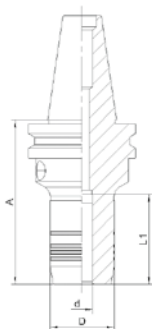
Deckscheibe mit Sechskant - *Flange with hex. end*

**Art. Nr.**  
**724.403**



**Klemmring**  
 Locking ring

D	B	D2	D4	Art. Nr.
40	20	84	70	<b>724.404.40</b>
50	20	92	75	<b>724.404.50</b>


**Hydrodehnfutter mit SK30-Schaftaufnahme**  
*Hydrosleeve with ISO 30-shank*

d	D	A	L2	S	Art. Nr.
10	28	55	38,5	SK30	<b>85.010.073.030</b>
3/8"	28	55	38,5	SK30	<b>85.095.111.030</b>
12	28	55	38,5	SK30	<b>85.012.065.030</b>
16	58	63	55	SK30	<b>85.016.065.030</b>
20	60	63	55	SK30	<b>85.020.111.030</b>
25	70	63	55	SK30	<b>85.025.111.030</b>

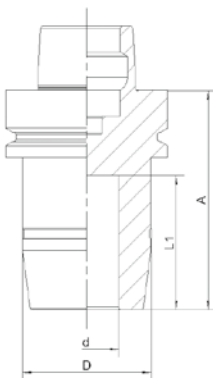
- ohne Anzugsbolzen
- *Without holding bolt*

**Hydrodehnfutter mit ISO 30-Schaftaufnahme**  
*Hydrosleeve with ISO 30-shank*

d	D	A	L1	S	Art. Nr.
25	70	82	55	SK40	<b>85.025.130.030</b>

**Hydro-Dehnspannfutter SK40**  
*Hydraulic collet chuck SK40*

d	D	A	L1	S	Art. Nr.
25	70	78	52	SK40	<b>85.025.146.040</b>

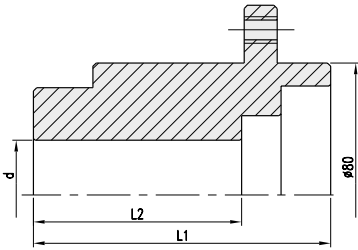

**Hydro-Dehnfutter mit HSK-Schaftaufnahme**  
*Hydrosleeve with SK 30-shank*

d	D	A	L2	S	Art. Nr.
20	42	85	52	HSK50F	<b>85.020.085.050</b>
25	50	85	52	HSK50F	<b>85.025.085.050</b>
6	26	80	37	HSK63F	<b>85.006.085.063</b>
8	28	80	37	HSK63F	<b>85.008.085.063</b>
10	30	80	42	HSK63F	<b>85.010.085.063</b>
12	32	80	47	HSK63F	<b>85.012.085.063</b>
14	34	80	47	HSK63F	<b>85.014.085.063</b>
16	38	80	52	HSK63F	<b>85.016.085.063</b>
18	40	80	52	HSK63F	<b>85.018.085.063</b>
20	42	80	52	HSK63F	<b>85.020.085.063</b>
25	50	85	52	HSK63F	<b>85.025.110.063</b>
25	50	85	52	HSK63F	<b>85.025.117.063</b>

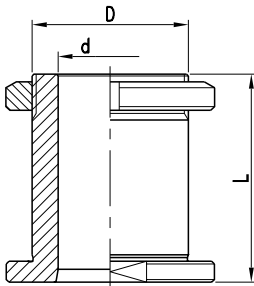
- ohne Anzugsbolzen
- *Without holding bolt*

**Ersatzteile/Zubehör**  
*Spare parts/Accessories*

	Art. Nr.
Quergriffschlüssel SW6 - <i>Allen key SW6</i>	<b>36.100.06</b>
Anzugsbolzen - <i>retainingbolt</i>	<b>A424.DIV</b>

**730****Flanschbüchse**  
*Flange sleeve*PG  
02**Starre Flanschbüchse**  
*Flange sleeve*

L1	L2	d	TK	Art. Nr.
90	63	35 DKN	8/M8/100 Homag, IMA, Torwegge	<b>730.101</b>
97	68	40 DKN	8/M8/100 Schwabedissen, Gabianni	<b>730.102</b>

**Zubehör**  
*Attachment*Schraube für Werkzeugmontage - *Screw for tool mounting*Art. Nr.  
**705.700.16****704****Schraubbüchse**  
*Sleeve with locking nut*PG  
02**Abmessungen**  
*Dimensions*

d	D	L	I	Art. Nr. LH	Art. Nr. RH
30	50	85	63	<b>704.271</b>	<b>704.171</b>
	60	85	63	<b>704.251</b>	<b>704.151</b>
	50	110	88	<b>704.281</b>	<b>704.181</b>
35	60	110	88	<b>704.261</b>	<b>704.161</b>
	50	85	63	<b>704.272</b>	<b>704.172</b>
	60	85	63	<b>704.252</b>	<b>704.152</b>
40	50	110	88	<b>704.282</b>	<b>704.182</b>
	60	110	88	<b>704.262</b>	<b>704.162</b>
	50	85	63	<b>704.273</b>	<b>704.173</b>
50	60	85	63	<b>704.253</b>	<b>704.153</b>
	50	110	88	<b>704.283</b>	<b>704.183</b>
	60	110	88	<b>704.263</b>	<b>704.163</b>
50	60	85	63	<b>704.254</b>	<b>704.154</b>
	60	110	88	<b>704.264</b>	<b>704.164</b>

**Zubehör**  
*Attachment*Hakenschlüssel - *Hook wrench for*

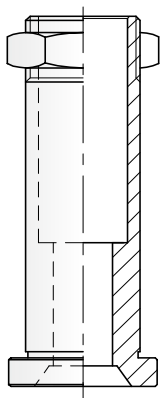
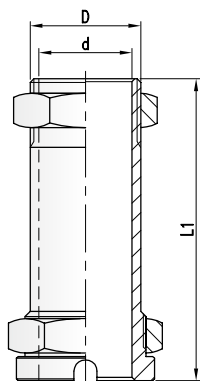
D=50

Art. Nr.

**706.501**

D=60

**706.502**

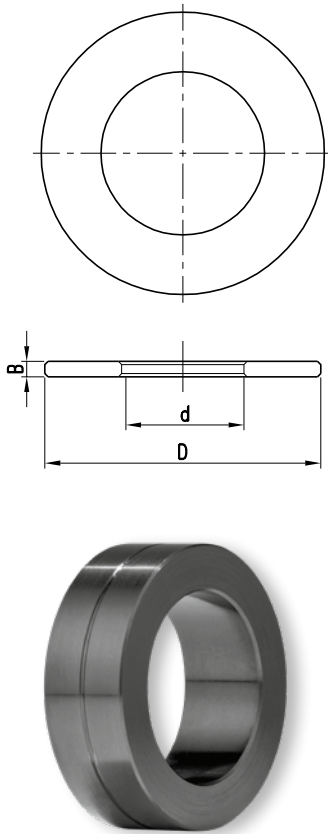

**Abmessungen**  
*Dimensions*

D	L	d	Modell		Art. Nr.
32	140	27	TEKNA	TK610/Z	<b>729.211.27</b>
32	90	14		500	<b>729.201.14</b>
27	90	14		MN-75-AR	◇ <b>729.202.14</b>
32	90	14		MN-75-AR	<b>729.201.14</b>
50	85	40	ELUMATEC	AF-221, AF-222, AF-223	<b>729.173.40</b>
32	75	20		MA-91	<b>729.106.20</b>
32	160	25	IM/CRS	OL - 94	<b>729.208.25</b>
32	100	27	TRE-C	INTEX 2500	◇ <b>729.203.27</b>
32	150	27	LGF	BEBA	<b>729.206.27</b>
32	140	25		DIXI	<b>729.204.25</b>
32	200	25		DIXI	<b>729.207.25</b>
32	156	19		PHANTON - M	<b>729.301.19</b>
32	163	25		PHANTON - SK	<b>729.105.25</b>
32	150	27		FR 704, FR 706	<b>729.206.27</b>
				FR 702, FR 703, FR 712	
32	125	22	MIEPA	MP - 130	<b>729.303.22</b>
32	135	27		ML - 124/OS	<b>729.205.27</b>
32	135	27	OMC	FEROCE, FEROCE-A	<b>729.209.27</b>
				MÁXIMA, TIGRA, TIGRA-A	
32	135	27	OMGA	AL -132	<b>729.205.27</b>
32	135	27		ML - 120	<b>729.205.27</b>
32	135	27	RINALDI	LILIPUT 9M 7000 FS	<b>729.205.27</b>
32	145	22	TEKNA	TK-641	<b>729.104</b>
32	70	14		FV-100-M	<b>729.102.14</b>
22	70	14		FV-100-M	<b>729.103.14</b>
32	150	24		FV-140	<b>729.304.24</b>
32	173	25		FV-190-A	<b>729.302.25</b>
32	140	25	GREENMAC	GM 4590	<b>729.204.25</b>

- Andere Spannbüchsen zum Verschrauben von Werkzeugsätzen auf Anfrage.

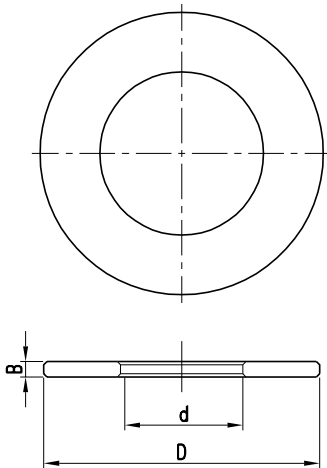
- *Sleeves for other machines under request. On request please state machine and model.*

- ◇ Serienartikel, kurzfristige Fertigung bei Bestellung
- ◇ *Standard article, short-time production after order*

Zwischenringe aus Stahl  
Steel-spacer

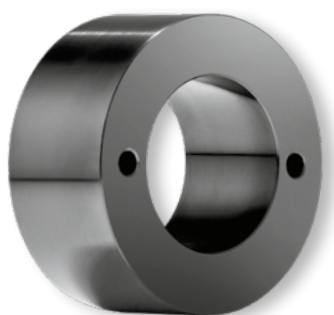
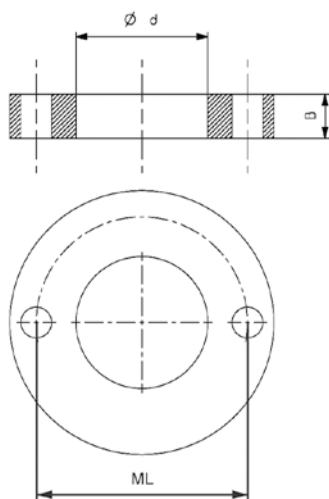
d	B	D	Art. Nr.
25,4	10,0	50	34.050.141
	20,0	50	34.050.142
	30,0	50	34.050.143
	40,0	50	34.050.144
30	0,1	50	34.050.077
	0,2	50	34.050.076
	0,5	50	34.050.075
	1,0	50	34.050.074
	2,0	50	34.050.073
	5,0	50	34.050.072
	7,0	50	34.050.071
	10,0	50	34.050.057
	20,0	50	34.050.058
	30,0	50	34.050.059
31,75	40,0	50	34.050.060
	50,0	50	34.050.061
	0,1	50	34.050.001
	0,2	50	34.050.325
	0,5	50	34.050.303
	1,0	50	34.050.004
	2,0	50	34.050.205
	5,0	50	34.050.081
	7,0	50	34.050.181
	10,0	50	34.050.082
32	20,0	50	34.050.083
	10,0	55	34.055.062
	20,0	55	34.055.063
	30,0	55	34.055.064
	40,0	55	34.055.065
	10,0	55	34.055.067
	20,0	55	34.055.068
35	30,0	55	34.055.069
	40,0	55	34.055.070
	0,1	55	34.055.039
	0,2	55	34.055.140
	0,5	55	34.055.041
	1,0	55	34.055.042
	2,0	55	34.055.043
38,1	5,0	55	34.055.044
	7,0	55	34.055.045
	10,0	55	34.055.046
	20,0	55	34.055.047
	10,0	60	34.060.047
	20,0	60	34.060.048
	30,0	60	34.060.049
	40,0	60	34.060.050
	10,0	60	34.060.061
	20,0	60	34.060.062
38,1	30,0	60	34.060.063
	40,0	60	34.060.064

- Fortsetzung nächste Seite
- Continued next page

Zwischenringe aus Stahl  
Steel-spacer

d	B	D	Art. Nr.
40	0,1	60	34.060.123
	0,2	60	34.060.124
	0,5	60	34.060.325
	1,0	60	34.060.126
	2,0	60	34.060.125
	5,0	60	34.060.328
	7,0	60	34.060.229
	10,0	60	34.060.027
	20,0	60	34.060.028
	30,0	60	34.060.029
45	0,1	65	34.065.090
	0,2	65	34.065.091
	0,5	65	34.065.092
	1,0	65	34.065.093
	2,0	65	34.065.094
	5,0	65	34.065.095
	7,0	65	34.065.096
	10,0	65	34.065.097
	20,0	65	34.065.098
	50	0,1	70
0,2		70	34.070.037
0,5		70	34.070.039
1,0		70	34.070.040
2,0		70	34.070.112
5,0		70	34.070.098
7,0		70	34.070.117
10,0		70	34.070.031
20,0		70	34.070.032
30,0		70	34.070.033
60	0,1	80	34.080.401
	0,2	80	34.080.402
	0,5	80	34.080.403
	1,0	80	34.080.404
	2,0	80	34.080.405
	5,0	80	34.080.406
	7,0	80	34.080.407
	10,0	80	34.080.041
	20,0	80	34.080.042

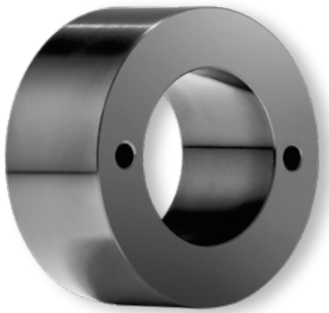
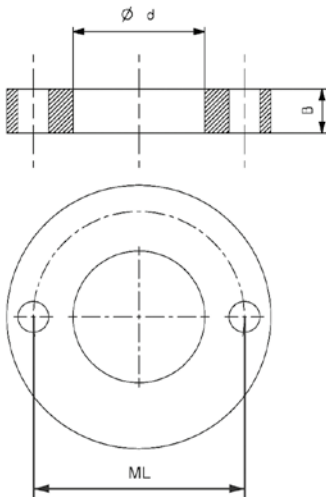



**Stahl-Zwischenring mit Mitnahmelöchern**  
*Steel-Spacer with pinholes*

d	B	D	ML/TK	Art. Nr.
20	0,1	45	4/6/32	34.045.019
	0,2	45		34.045.120
	0,5	45		34.045.021
	1,0	45		34.045.022
	2,0	45		34.045.123
	5,0	45		34.045.024
	7,0	45		34.045.125
	10,0	45		34.045.025
20	0,1	50	2/7/38	34.050.050
	0,2	50		34.050.048
	0,5	50		34.050.051
	1,0	50		34.050.052
	2,0	50		34.050.053
	3,0	50		34.050.054
	5,0	50		34.050.055
	7,0	50		34.050.049
	10,0	50		34.050.056
30	0,5	60	2/7/48	34.060.081
	1,0	60		34.060.082
	2,0	60		34.060.083
	3,0	60		34.060.084
	5,0	60		34.060.085
	10,0	60		34.060.086
30	5,0	85	2/7/54	34.085.070
	10,0	85		34.085.071
	20,0	85		34.085.072
	30,0	85		34.085.073
	40,0	85		34.085.074
	50,0	85		34.085.075
30/35	0,1	65	4/7/48	34.065.010
	0,2	65		34.065.011
	0,3	65		34.065.053
	0,5	65		34.065.050
	1,0	65		34.065.051
	2,0	65		34.065.052
	5,0	65		34.065.055
	7,0	65		34.065.057
	10,0	65		34.065.060
	15,0	65		34.065.115
	20,0	65		34.065.116
40	5,0	85	2/7/54	34.085.052
	10,0	85		34.085.054
	20,0	85		34.085.055
	30,0	85		34.085.056
	40,0	85		34.085.057
	50,0	85		34.085.058
40	0,1	85	4/7/58	34.085.401
	0,2	85		34.085.402
	0,5	85		34.085.403
	1,0	85		34.085.404
	2,0	85		34.085.405
	5,0	85		34.085.406
	10,0	85		34.085.407
	15,0	85		34.085.408
	20,0	85		34.085.409

- Fortsetzung nächste Seite
- *Continued next page*

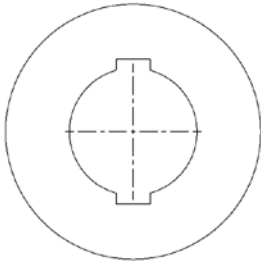



**Stahl-Zwischenring mit Mitnahmelöchern**  
*Steel-Spacer with pinholes*

d	B	D	ML/TK	Art. Nr.
40/50	0,1	80	4/7/65	<b>34.080.001</b>
	0,2	80		<b>34.080.002</b>
	0,5	80		<b>34.080.082</b>
	1,0	80		<b>34.080.010</b>
	2,0	80		<b>34.080.020</b>
	5,0	80		<b>34.080.050</b>
	7,0	80		<b>34.080.086</b>
	10,0	80		<b>34.080.087</b>
	15,0	80		<b>34.080.088</b>
	20,0	80		<b>34.080.089</b>
50	5,0	85	2/7/64	<b>34.085.090</b>
	10,0	85		<b>34.085.091</b>
	20,0	85		<b>34.085.092</b>
	30,0	85		<b>34.085.093</b>
	40,0	85		<b>34.085.094</b>
	50,0	85		<b>34.085.095</b>
60	0,05	90	3/9/74	<b>34.090.015</b>
	0,1	90		<b>34.090.083</b>
	0,2	90		<b>34.090.021</b>
	0,3	90		<b>34.090.022</b>
	0,5	90		<b>34.090.005</b>
	1,0	90		<b>34.090.040</b>
	3,0	90		<b>34.090.002</b>
	5,0	90		<b>34.090.014</b>
	10,0	90		<b>34.090.018</b>
	15,0	90		<b>34.090.043</b>
20,0	90	<b>34.090.044</b>		

**Zwischenringe zur Feineinstellung**  
*Spacer rings for fine adjustment*

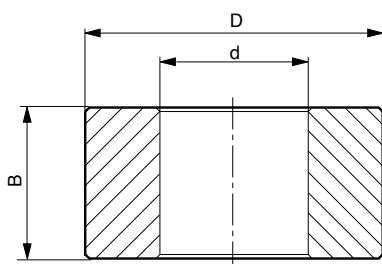
d	B	D	ML/TK	Art.Nr.
20	0,1	50	2/7/36	<b>34.050.047</b>
	0,05	50	2/7/36	<b>34.050.015</b>
30	0,1	60	2/7/48	<b>34.060.079</b>
	0,05	60	2/7/46	<b>34.060.078</b>


**Zwischenringe - Präzisionsausführung mit Doppelkeilnut**  
*Spacer ring set - High precision model with double keyway*

d	B	D	DKN	Art. Nr.
20	1,0	36	6x2,8	<b>34.036.010</b>
	2,0	36		<b>34.036.020</b>
	5,0	36		<b>34.036.050</b>
	10,0	36		<b>34.036.100</b>
30	1,0	50	8x3,5	<b>34.050.504</b>
	2,0	50		<b>34.050.502</b>
	3,0	50		<b>34.050.503</b>
	5,0	50		<b>34.050.505</b>
	10,0	50		<b>34.050.510</b>
30	1,0	60	8x3,3	<b>34.060.092</b>
	2,0	60		<b>34.060.093</b>
	2,5	60		<b>34.060.097</b>
	3,0	60		<b>34.060.094</b>
	5,0	60		<b>34.060.095</b>
	10,0	60		<b>34.060.096</b>

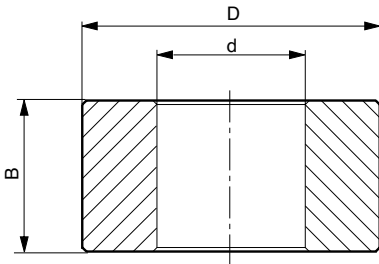
**Zwischenringe mit Doppelkeilnut zur Feineinstellung**  
*Spacers with double keyway for fine adjustment*

d	B	D	DKN	Art. Nr.
20	0,05	36	6x2,8	<b>34.036.005</b>
	0,1	36	6x2,8	<b>34.036.001</b>
30	0,05	50	8x3,3	<b>34.050.005</b>
	0,1	50	8x3,3	<b>34.050.101</b>
30	0,5	50	8x3,5	<b>34.050.555</b>
30	0,05	60	8x3,3	<b>34.060.066</b>
	0,1	60	8x3,3	<b>34.060.090</b>
	0,2	60	8x3,3	<b>34.060.100</b>
	0,5	60	8x3,3	<b>34.060.091</b>

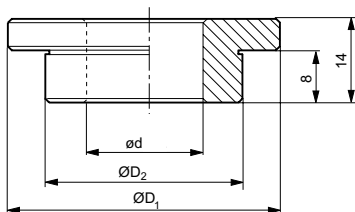
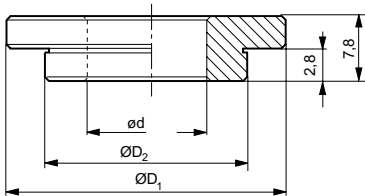

**Stahl-Reduzierhülse**  
 Steel-reducing sleeve

D	B	D	Art. Nr.
35	2	30	714.101
	5	30	714.102
	10	30	714.103
	15	30	714.104
	20	30	714.105
	30	30	714.106
	40	30	714.107
	50	30	714.108
40	2	30	714.251
	5	30	714.252
	10	30	714.253
	15	30	714.254
	20	30	714.255
	30	30	714.256
	40	30	714.257
	50	30	714.258
40	2	31,75	714.151
	5	31,75	714.152
	10	31,75	714.153
	15	31,75	714.154
	20	31,75	714.155
	30	31,75	714.156
	40	31,75	714.157
	50	31,75	714.158
40	2	35	714.201
	5	35	714.202
	10	35	714.203
	15	35	714.204
	20	35	714.205
	30	35	714.206
	40	35	714.207
	50	35	714.208
45	2	30	714.301
	5	30	714.302
	10	30	714.303
	15	30	714.304
	20	30	714.305
	30	30	714.306
	40	30	714.307
	50	30	714.308
50	2	30	714.451
	5	30	714.452
	10	30	714.453
	15	30	714.454
	20	30	714.455
	30	30	714.456
	40	30	714.457
	50	30	714.458
50	2	35	714.401
	5	35	714.402
	10	35	714.403
	15	35	714.404

- Fortsetzung nächste Seite
- Continued next page

**714****Reduzierhülse**  
Reducing sleeve**PG**  
**02****Stahl-Reduzierhülse**  
Steel-reducing sleeve

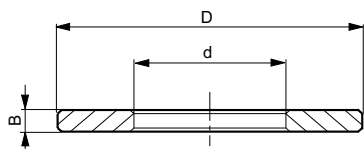
D	B	d	Art. Nr.
	20	35	<b>714.405</b>
	30	35	<b>714.406</b>
	40	35	<b>714.407</b>
	50	35	<b>714.408</b>
50	2	40	<b>714.351</b>
	5	40	<b>714.352</b>
	10	40	<b>714.353</b>
	15	40	<b>714.354</b>
	20	40	<b>714.355</b>
	30	40	<b>714.356</b>
	40	40	<b>714.357</b>
	50	40	<b>714.358</b>
50	2	45	<b>714.501</b>
	5	45	<b>714.502</b>
	10	45	<b>714.503</b>
	15	45	<b>714.504</b>
	20	45	<b>714.505</b>
	30	45	<b>714.506</b>

**713****Reduziererring mit Bund**  
Reducing sleeve with collar**PG**  
**02****Stahl-Reduziererring**  
Steel-reducing sleeve

d	D <sub>2</sub>	D <sub>1</sub>	Art. Nr. Type 1	Art. Nr. Type 2
30	35	49	<b>713.101</b>	<b>713.115</b>
	40	54	<b>713.102</b>	<b>713.116</b>
	45	59	<b>713.103</b>	<b>713.117</b>
	50	64	<b>713.104</b>	<b>713.118</b>
31,75	35	49	<b>713.105</b>	<b>713.119</b>
	40	54	<b>713.106</b>	<b>713.120</b>
	45	59	<b>713.107</b>	<b>713.121</b>
	50	64	<b>713.108</b>	<b>713.122</b>
35	40	54	<b>713.109</b>	<b>713.123</b>
	45	59	<b>713.110</b>	<b>713.124</b>
	50	64	<b>713.111</b>	<b>713.125</b>
40	45	50	<b>713.112</b>	<b>713.126</b>
	50	64	<b>713.113</b>	<b>713.127</b>
45	50	64	<b>713.114</b>	<b>713.128</b>

- Auslieferung erfolgt als Set von 2St.
- Supplied as set of 2pcs.



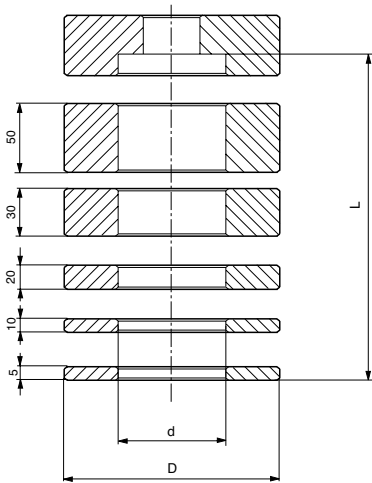

**Stahl-Zwischenring**  
*Steel-reducing sleeve*

D	B	d	Art. Nr.
16	2	30	<b>712.113</b>
20	2	30	<b>712.112</b>
	2	32	<b>712.110</b>
	2	35	<b>712.106</b>
25	2	20	<b>712.114</b>
	2	30	<b>712.111</b>
	2	32	<b>712.109</b>
	2	35	<b>712.105</b>
25,4	2	32	<b>712.108</b>
30	2	32	<b>712.107</b>
	2	35	<b>712.104</b>
32	2	35	<b>712.103</b>
	2	40	<b>712.102</b>
35	2	40	<b>712.101</b>

**715**

**Ringsatz für Tischfräsmaschinen**  
Steel-spacer set for spindle end

**PG  
02**



**Stahl-Reduzierring**  
Steel-spacer set

d	D	L	Art. Nr.
30	43	200	<b>715.300</b>
35	48	200	<b>715.350</b>
40	54	200	<b>715.400</b>
45	62	245	<b>715.450</b>
50	65	245	<b>715.500</b>

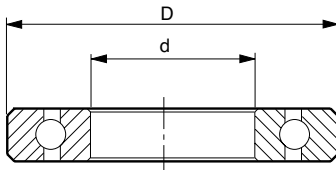
**Ring Satz**  
Spacer set

L=200	2x5; 2x10; 3x20; 2x30; 1x50
L=245	3x5; 2x10; 1x20; 3x30; 2x50

**701**

**Kugellager**  
Ball bearing

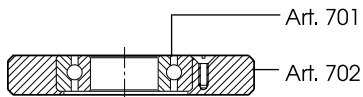
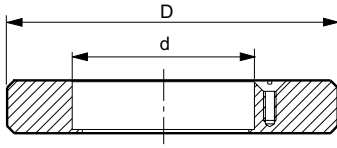
**PG  
02**



**Kugellager**  
Ball bearing

D	d	Art. Nr.
9,5	3,1	<b>701.051</b>
9,5	4,7	<b>701.052</b>
12,7	4,7	<b>701.053</b>
19	6	<b>701.054</b>
22	8	<b>701.055</b>
55	30	<b>701.101</b>
62	35	<b>701.102</b>
68	40	<b>701.103</b>
75	45	<b>701.104</b>
80	50	<b>701.105</b>
69	31	<b>701.106</b>

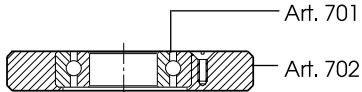
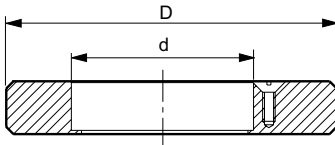



**Anlaufring**  
*Template ring*

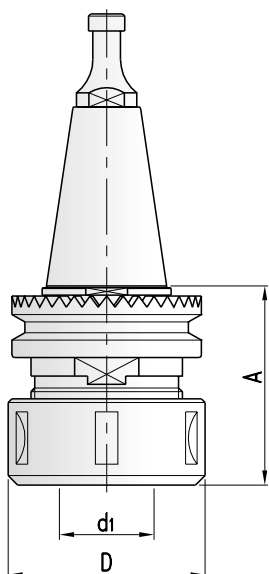
<b>d</b>	<b>B</b>	<b>D</b>	<b>Art. Nr.</b>
55	15,5	70	<b>702.101</b>
	15,5	75	<b>702.106</b>
	15,5	80	<b>702.105</b>
	15,5	85	<b>702.107</b>
	15,5	86	<b>702.104</b>
	15,5	90	<b>702.108</b>
	15,5	94	<b>702.102</b>
	15,5	95	<b>702.109</b>
	15,5	100	<b>702.110</b>
	15,5	105	<b>702.111</b>
	15,5	110	<b>702.112</b>
	15,5	115	<b>702.113</b>
	15,5	120	<b>702.103</b>
	15,5	125	<b>702.115</b>
	15,5	130	<b>702.116</b>
	15,5	135	<b>702.117</b>
	15,5	140	<b>702.118</b>
62	16,5	75	<b>702.145</b>
	16,5	78	<b>702.146</b>
	16,5	80	<b>702.147</b>
	16,5	85	<b>702.148</b>
	16,5	90	<b>702.149</b>
	16,5	95	<b>702.150</b>
	16,5	100	<b>702.151</b>
	16,5	105	<b>702.152</b>
	16,5	110	<b>702.153</b>
	16,5	115	<b>702.154</b>
	16,5	120	<b>702.155</b>
	16,5	125	<b>702.156</b>
	16,5	130	<b>702.157</b>
	16,5	135	<b>702.158</b>
	16,5	140	<b>702.159</b>
68	17,5	75	<b>702.170</b>
	17,5	80	<b>702.171</b>
	17,5	85	<b>702.172</b>
	17,5	90	<b>702.173</b>
	17,5	95	<b>702.174</b>
	17,5	100	<b>702.175</b>
	17,5	105	<b>702.176</b>
	17,5	110	<b>702.177</b>
	17,5	115	<b>702.178</b>
	17,5	120	<b>702.179</b>
	17,5	125	<b>702.180</b>
	17,5	130	<b>702.181</b>
	17,5	135	<b>702.182</b>
	17,5	140	<b>702.183</b>

- Fortsetzung nächste Seite
- *Continued next page*

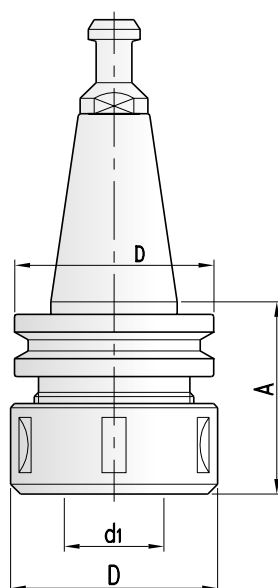



**Anlaufring**  
*Template ring*

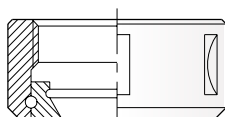
d	B	D	Art. Nr.
69,85	16,5	80	<b>702.125</b>
	16,5	85	<b>702.126</b>
	16,5	90	<b>702.127</b>
	16,5	95	<b>702.128</b>
	16,5	100	<b>702.129</b>
	16,5	105	<b>702.130</b>
	16,5	110	<b>702.131</b>
	16,5	115	<b>702.132</b>
	16,5	120	<b>702.133</b>
	16,5	125	<b>702.134</b>
	16,5	130	<b>702.135</b>
	16,5	135	<b>702.136</b>
	16,5	140	<b>702.137</b>
75	18,5	90	<b>702.190</b>
	18,5	95	<b>702.191</b>
	18,5	100	<b>702.192</b>
	18,5	105	<b>702.193</b>
	18,5	110	<b>702.194</b>
	18,5	115	<b>702.195</b>
	18,5	120	<b>702.196</b>
	18,5	125	<b>702.197</b>
	18,5	130	<b>702.198</b>
	18,5	135	<b>702.199</b>
	18,5	140	<b>702.200</b>
80	18,5	90	<b>702.210</b>
	18,5	95	<b>702.211</b>
	18,5	100	<b>702.212</b>
	18,5	104	<b>702.221</b>
	18,5	105	<b>702.213</b>
	18,5	110	<b>702.214</b>
	18,5	115	<b>702.215</b>
	18,5	120	<b>702.216</b>
	18,5	125	<b>702.217</b>
	18,5	130	<b>702.218</b>
	18,5	135	<b>702.219</b>
	18,5	140	<b>702.220</b>
	18,5	114	<b>702.222</b>
	18,5	109,5	<b>702.224</b>



- Für Links- und Rechtslauf
- For RH and LH rotation



- Für Links- und Rechtslauf
- For RH and LH rotation



- Kugelgelagerte Spannmutter
- Collet nut with ball bearing

**ISO 30 - Spannzangenfutter mit Spannmutter**  
*ISO 30 - Collet chuck with collet nut*

S	Nr.	D	A	d1	Art. Nr.
<b>SCM, Morbidelli, verzahnt</b>					
ISO 30	6	50	55	6-20 (ER32)	<b>86.055.230</b>
	6	60	72	6-25 (462E)	<b>86.072.230</b>

**Zubehör**  
*Attachment*

	D	Dim.	Art. Nr.
Spannmutter - Collet nut	50	M40x1,5	<b>88.470.050</b>
	60	M48x2	<b>88.462.060</b>
Schlüssel - Wrench	50	45/50	<b>706.504</b>
	60	58/62	<b>706.503</b>

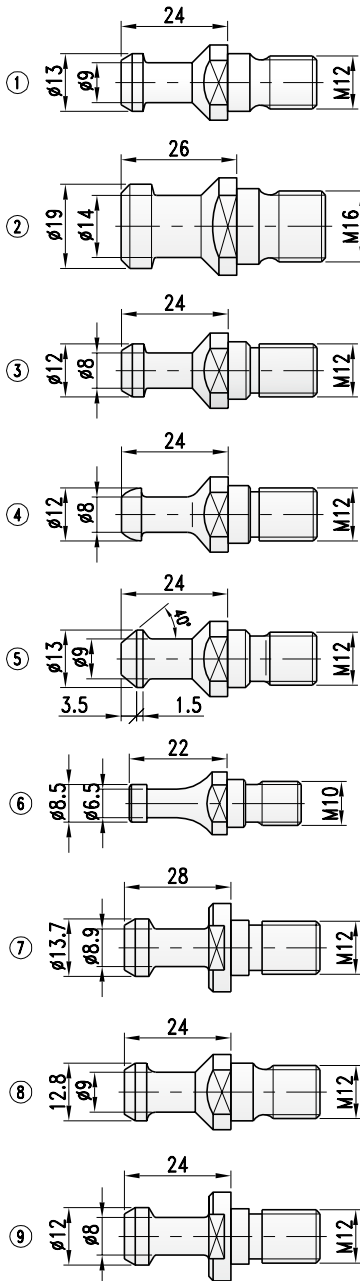
**SK-Spannzangenfutter mit Spannmutter**  
*SK-Collet chuck with collet nut*

S	Nr.	D	A	d1	Art. Nr.
<b>IMA, Maka, Reichenbacher, Biesse, Alberti, Stiegherr., etc.</b>					
SK30	1	50	63	6-20 (ER32)	<b>86.163.030</b>
	1	63	63	6-25 (ER40)	<b>86.063.030</b>
SK40	2	60	70	6-25 (462E)	<b>86.070.060</b>
<b>Biesse (bis • until 9/92)</b>					
SK30	3	50	63	6-20 (ER32)	<b>86.163.130</b>
	3	63	63	6-25 (ER40)	<b>86.063.130</b>
<b>Biesse (nach • after 9/92, spindle HSD)</b>					
SK30	4	50	63	6-20 (ER32)	<b>86.163.230</b>
	4	63	63	6-25 (ER40)	<b>86.063.230</b>
<b>Alberti</b>					
SK30	5	50	63	6-20 (ER32)	<b>86.063.330</b>
	5	63	63	6-25 (ER40)	<b>86.163.330</b>
<b>Masterwood (bis • until 1/99, spindle HSD)</b>					
SK30	4	50	63	6-20 (ER32)	<b>86.163.231</b>
<b>Masterwood (nach • after 1/99, spindle Colombo)</b>					
SK30	5	63	63	6-25 (ER40)	<b>86.163.331</b>
<b>CMS</b>					
ISO 30	8	50	46	6-20 (ER32)	<b>86.046.130</b>
	8	63	70	6-25 (ER40)	<b>86.060.130</b>
<b>Heian</b>					
BT35	7	60	70	6-25 (ER40)	<b>86.070.160</b>
<b>Esseteam (spindle Elite), Stemm</b>					
SK30	9	50	60	6-20 (ER32)	<b>86.060.050</b>
	9	63	67	6-25 (ER40)	<b>86.067.063</b>

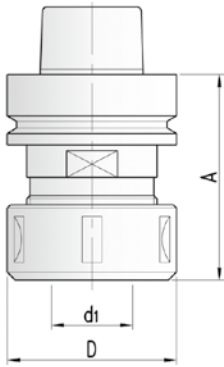
- Anzugsbolzen und Spannmutter beinhaltet
- Holding bolt and collet nut included

**Ersatzteile**  
*Spare parts*

	D	Dim.	Art. Nr.
Spannmutter - Collet nut	50	M40x1,5	<b>88.470.050</b>
	60	M48x2	<b>88.462.060</b>
	63	M50x1,5	<b>88.472.063</b>
Schlüssel - Wrench	50	45/50	<b>706.504</b>
	60	58/62	<b>706.503</b>

Anzugsbolzen  
Holding bolts

Nr.	S	Maschine.	Art. Nr.
1	SK30	IMA, Maka, Reichenbacher, Weeke, etc. (DIN 69872)	<b>3972.000.001</b>
2	SK40	IMA, Maka, Reichenbacher, Weeke, etc. (DIN 69872)	<b>3972.000.002</b>
3	SK30	Biesse (bis • until 9/92)	<b>3972.000.003</b>
4	SK30	Biesse (nach • after 9/92), Masterwood (motor HSD)	<b>3972.000.004</b>
5	SK30	Alberti, Masterwood (motor Colombo)	<b>3972.000.005</b>
6	ISO30	SCM, Morbidelli	<b>3972.000.006</b>
7	BT35	Heian, Shoda	<b>3972.000.007</b>
8	ISO30	CMS	<b>3972.000.008</b>
9	SK30	Stemm, Esseteam (motor Elfe)	<b>3972.000.009</b>


**HSK-Spannzangenfutter mit Spannmutter**  
*HSK-Collet chuck with collet nut*

A	D	d1	HSK/SpZ	Art. Nr.
76	63	2-26	HSK63E/472E	<b>84.018.070.063</b>
70	50	2-20	HSK63E/470E	<b>84.018.170.063</b>
70	43	2-16	HSK63E/430E	<b>84.018.100.063</b>
76	60	2-25	HSK63E/462E	<b>84.018.176.063</b>
76	63	2-26	HSK63F/472E	<b>84.018.276.063</b>
70	50	2-20	HSK63F/470E	<b>84.018.370.063</b>
70	43	2-16	HSK63F/430E	<b>84.018.470.063</b>
76	60	2-25	HSK63F/462E	<b>84.018.075.063</b>
76	60	2-25	HSK63F/462E	<b>84.009.075.063</b>
115	60	2-25	HSK63F/462E	<b>84.009.115.063</b>
115	60	2-25	HSK63F/462E	<b>84.018.115.063</b>
76	60	2-25	HSK63F/462E	<b>84.018.075.050</b>
115	60	2-25	HSK63F/462E	<b>84.018.115.050</b>
60	50	2-20	HSK40E/470E	<b>84.018.060.050</b>
65	63	2-25	HSK50E/472E	<b>84.018.065.063</b>

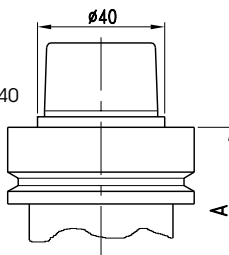
- Lieferung ohne Spannzange
- *Collet not included*

**Ersatzteile**  
*Spare parts*

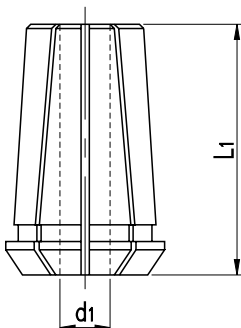
	D	Dim.	Art. Nr.
Spannmutter - <i>Collet nut</i>	35	M30x1,0	<b>88.430.035</b>
	50	M40x1,5	<b>88.470.050</b>
	60	M48x2	<b>88.462.060</b>
	63	M50x1,5	<b>88.472.063</b>
Schlüssel - <i>Wrench</i>	50	45/50	<b>706.504</b>
	60	58/62	<b>706.503</b>

- Kugelgelagerte Spannmutter
- Weitere Abmessungen, siehe ProLock Spanntechnik Prospekt
- *Collet not included*
- *Further dimension, see ProLock tool clamping systems brochure*

HSK 50E/40



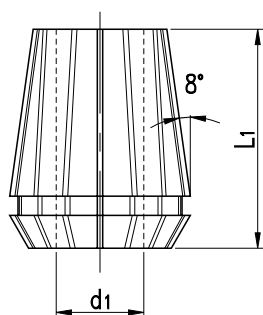
- Für Links- und Rechtslauf
- *For RH and LH rotation*



- Weitere Größen auf Anfrage
- *Further dimensions on inquiry*

**Spannzangen DIN 6388/462E**  
*Collets DIN 6388/462E*

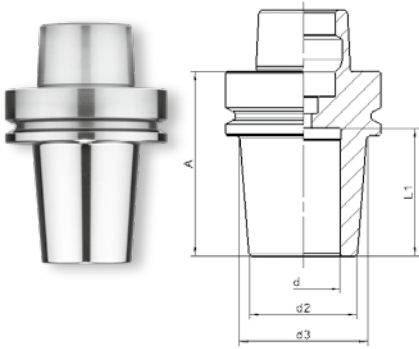
d1	L1	Typ	Art. Nr.
2	52	DIN 6388 / 462E / OZ	<b>87.462.02</b>
3			<b>87.462.03</b>
4			<b>87.462.04</b>
5			<b>87.462.05</b>
6			<b>87.462.06</b>
8			<b>87.462.08</b>
10			<b>87.462.10</b>
12			<b>87.462.12</b>
14			<b>87.462.14</b>
16			<b>87.462.16</b>
18			<b>87.462.18</b>
20			<b>87.462.20</b>
25			<b>87.462.25</b>



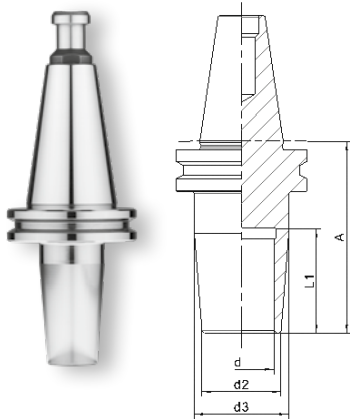
- Weitere Größen auf Anfrage
- Further dimensions on inquiry

**ER-Spannzangen**  
*ER-collets*

d1	D	L1	Typ	Art. Nr.
<b>bis 12 mm - up to 12 mm</b>				
2	21	31	DIN 6499 / 428E / ER20	<b>87.428.02</b>
3				<b>87.428.03</b>
4				<b>87.428.04</b>
5				<b>87.428.05</b>
6				<b>87.428.06</b>
8				<b>87.428.08</b>
10				<b>87.428.10</b>
12				<b>87.428.12</b>
<b>bis 16 mm - up to 16 mm</b>				
2	26	34	DIN 6499 / 430E / ER25	<b>87.430.02</b>
3				<b>87.430.03</b>
4				<b>87.430.04</b>
5				<b>87.430.05</b>
6				<b>87.430.06</b>
8				<b>87.430.08</b>
10				<b>87.430.10</b>
12				<b>87.430.12</b>
14				<b>87.430.14</b>
16				<b>87.430.16</b>
<b>bis 20 mm - up to 20 mm</b>				
2	33	40	DIN 6499 / 470E / ER32	<b>87.470.02</b>
3				<b>87.470.03</b>
4				<b>87.470.04</b>
5				<b>87.470.05</b>
6				<b>87.470.06</b>
7(6,35)				<b>87.470.07</b>
8				<b>87.470.08</b>
10				<b>87.470.10</b>
12				<b>87.470.12</b>
13(12,7)				<b>87.470.13</b>
14				<b>87.470.14</b>
16				<b>87.470.16</b>
18				<b>87.470.18</b>
20				<b>87.470.20</b>
<b>bis 25 mm - up to 25 mm</b>				
2	41	46	DIN 6499 / 472E / ER40	<b>87.472.02</b>
3				<b>87.472.03</b>
4				<b>87.472.04</b>
5				<b>87.472.05</b>
6				<b>87.472.06</b>
7(6,35)				<b>87.472.07</b>
8				<b>87.472.08</b>
10				<b>87.472.10</b>
12				<b>87.472.12</b>
13(12,7)				<b>87.472.13</b>
14				<b>87.472.14</b>
16				<b>87.472.16</b>
18				<b>87.472.18</b>
20				<b>87.472.20</b>
25				<b>87.472.25</b>


**HSK63F-Schrumpffutter**  
*HSK63F-Induction shrink chuck*

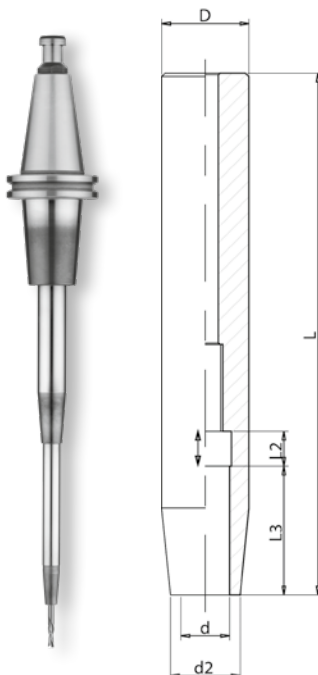
A	d	d2	S	Art. Nr.
75	6	20	HSK63F	<b>82.006.075.063</b>
	8	20	HSK63F	<b>82.008.075.063</b>
	10	24	HSK63F	<b>82.010.075.063</b>
	12	24	HSK63F	<b>82.012.075.063</b>
	16	27	HSK63F	<b>82.016.075.063</b>
	20	33	HSK63F	<b>82.020.075.063</b>
	25	38	HSK63F	<b>82.025.075.063</b>


**SK30-Schrumpffutter**  
*SK30-Induction shrink chuck*

A	d	d2	S	Art. Nr.
70	10	20	SK30	<b>80.010.070.030</b>
70	12	24	SK30	<b>80.012.070.030</b>
70	14	27	SK30	<b>80.014.070.030</b>
70	16	27	SK30	<b>80.016.070.030</b>
70	20	33	SK30	<b>80.020.070.030</b>
70	25	44	SK30	<b>80.025.070.030</b>

**SK40-Schrumpffutter**  
*SK40-Induction shrink chucks*

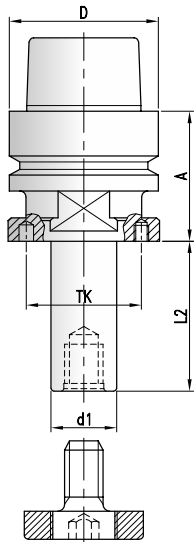
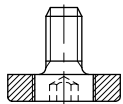
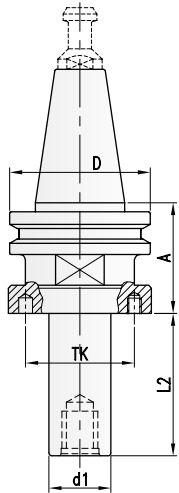
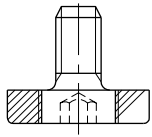
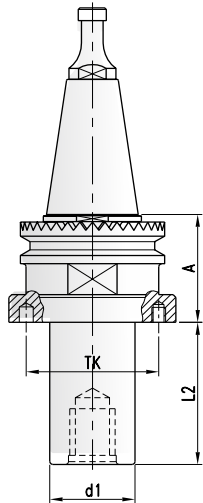
A	d	d2	S	Art. Nr.
80	6	20	SK40	<b>81.006.080.040</b>
80	8	20	SK40	<b>81.008.080.040</b>
80	10	24	SK40	<b>81.010.080.040</b>
80	12	24	SK40	<b>81.012.080.040</b>
80	16	27	SK40	<b>81.016.080.040</b>
80	20	33	SK40	<b>81.020.080.040</b>
80	25	44	SK40	<b>81.025.080.040</b>

**Schrumpfverlängerung - zylindrisch**  
*shrink fit extension - cylindrical*


D	d	d2	A	L2	L3	Art. Nr.
20	3	10	150	-	12	<b>80.030.150.20</b>
20	4	10	150	-	16	<b>80.040.150.20</b>
20	5	10	150	-	20	<b>80.050.150.20</b>
20	6	10	150	10	26	<b>80.060.150.20</b>
20	8	12	150	10	26	<b>80.080.150.20</b>
20	10	14	150	10	32	<b>80.100.150.20</b>
20	12	16	150	10	37	<b>80.120.150.20</b>
25	8	20	150	10	26	<b>80.080.150.25</b>
25	10	20	150	10	32	<b>80.100.150.25</b>
25	12	20	150	10	37	<b>80.120.150.25</b>
25	14	20	150	10	37	<b>80.140.150.25</b>
25	16	22	150	10	40	<b>80.160.150.25</b>

Der Einsatz eines Induktions-Schrumpfgerätes ermöglicht das Ein- und Ausschumpfen von Hartmetall- und Stahlschäften in die entsprechenden Schrumpffutter. Vorteile sind die höchste Rundlaufgenauigkeit (max. 0,003mm), die schlanke Störkontur, höchste Haltekraft und die direkte formstabile Einspannung. Für Rechts- und Linkslauf geeignet.

Using an induction shrink system enables the shrinking of carbide- and steel-shanks in the corresponding induction shrink chucks. Advantages are the highest concentricity precision (max. 0,003mm), the slim interference contour, the maximum of gripping force and the direct dimensionally stable clamping. Suitable for right- and left-hand rotation.


**ISO30-Fräsdorn**  
**ISO30-Arbor**

d1	L2	A	TK	S	D	Nr.	Art. Nr.
<b>SCM, Morbidelli, verzahnt</b>							
20	40	45	38	ISO30		6	<b>47.020.340.030</b>
	70	45		ISO30		6	<b>47.020.370.030</b>
30	40	45	48	ISO30		6	<b>47.030.340.030</b>
	80	45		ISO30		6	<b>47.030.380.030</b>
<b>CMS</b>							
20	40	42	38	ISO30	46	8	<b>47.020.440.030</b>
	70					8	<b>47.020.470.030</b>
30	40	42	48	ISO30	46	8	<b>47.030.440.030</b>
	80					8	<b>47.030.480.030</b>

- Lieferung ohne Distanzringe und Anzugsbolzen
- Supplied without spacers and holding holding bolt.

**SK-Fräsdorn**  
**SK-Arbor**

d1	L2	A	TK	S	Art. Nr.
<b>IMA, Maka, Reichenbacher, Weeke, Biesse, Alberti, Stegherr, etc.</b>					
20	40	42	38	SK30	<b>47.020.240.030</b>
	70				<b>47.020.270.030</b>
20	40	42	38	SK40	<b>47.020.240.040</b>
	70				<b>47.020.270.040</b>
30	40	42	48	SK30	<b>47.020.140.030</b>
	80				<b>47.030.080.030</b>
30	40	42	48	SK40	<b>47.030.140.040</b>
	80				<b>47.030.180.040</b>

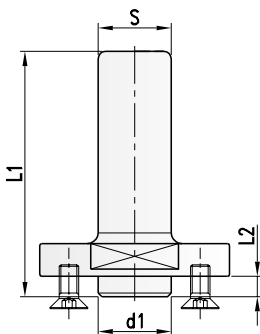
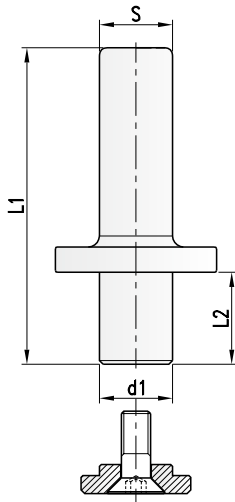
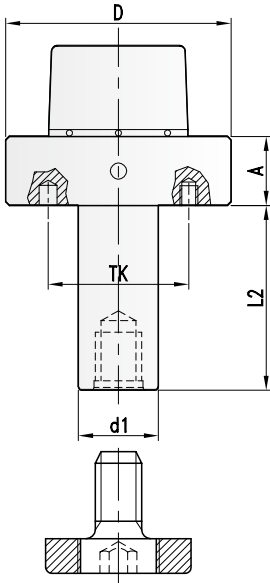
- Lieferung ohne Distanzringe und Anzugsbolzen
- Supplied without spacers and holding holding bolt.

**HSK-Fräsdorn**  
**HSK-arbor**

d1	L2	A	TK	S	D	Art. Nr.
20	70	45	38	HSK 63F	63	<b>47.020.070.163</b>
30	20	45	48	HSK 63F	63	<b>47.030.020.063</b>
	40	45		HSK 63F	63	<b>47.030.040.263</b>
	55	45		HSK 63F	63	<b>47.030.056.063</b>
	80	45		HSK 63F	63	<b>47.030.080.163</b>
	100	45		HSK 63F	63	<b>47.030.100.063</b>

Lange Ausführung • Long design

20	40	80	38	HSK 63F	63	<b>47.020.040.063</b>
	70	80		HSK 63F	63	<b>47.020.070.063</b>
30	20	75	48	HSK 63F	63	<b>47.030.020.163</b>
	40	75		HSK 63F	63	<b>47.030.040.463</b>
	55	75		HSK 63F	63	<b>47.030.055.163</b>
	80	75		HSK 63F	63	<b>47.030.080.263</b>
	100	75		HSK 63F	63	<b>47.030.100.163</b>
	80	80		HSK 63F	63	<b>47.030.080.363</b>



- Für Lamello-Nuter mit Bohrung 22
- For direct mounting of tools, d1=22 for grooving cutter "LAMELLO"

**HSK-Fräsdorn für automatischen Werkzeugwechsel - beidseitiger Passfeder**  
*HSK-milling arbor for automatic tool change - with both-sided feather key to lock against rotation*

d1	L2	ML	A	S	Art. Nr.	
30	40	2/6/48+2/M6/48	26	HSK85WS	85	<b>47.030.040.085</b>
	60	2/6/48+2/M6/48	26			<b>47.030.060.085</b>
	80	2/6/48+2/M6/48	26			<b>47.030.080.085</b>
	130	2/6/48+2/M6/48	26			<b>47.030.130.085</b>
	170	2/6/48+2/M6/48	26			<b>47.030.170.185</b>
240	2/6/48+2/M6/48	26			<b>47.030.240.085</b>	
35	180	2/6/54+2/M6/54	26	HSK85WS	85	<b>47.035.180.085</b>
40	40	2/6/54+2/M6/54	26	HSK85WS	85	<b>47.040.040.085</b>
	60	2/6/54+2/M6/54	26			<b>47.040.060.085</b>
	80	2/6/54+2/M6/54	26			<b>47.040.080.085</b>
	100	2/6/54+2/M6/54	26			<b>47.040.100.085</b>
	130	2/6/54+2/M6/54	26			<b>47.040.130.085</b>
	170	2/6/54+2/M6/54	26			<b>47.040.170.185</b>
	180	2/6/54+2/M6/54	26			<b>47.040.180.085</b>
	210	2/6/54+2/M6/54	26			<b>47.040.210.185</b>
	240	2/6/54+2/M6/54	26			<b>47.040.240.085</b>
	50	40	2/6/64+2/M6/64	26	HSK85WS	85
60		2/6/64+2/M6/64	26			<b>47.050.060.085</b>
80		2/6/64+2/M6/64	26			<b>47.050.080.085</b>
100		2/6/64+2/M6/64	26			<b>47.050.100.085</b>
130		2/6/64+2/M6/64	26			<b>47.050.130.085</b>
150		2/6/64+2/M6/64	26			<b>47.050.150.085</b>
170		2/6/64+2/M6/64	26			<b>47.050.170.085</b>
180		2/6/64+2/M6/64	26			<b>47.050.180.085</b>
240		2/6/64+2/M6/64	26			<b>47.050.240.085</b>
270		2/6/64+2/M6/64	26			<b>47.050.270.085</b>

- Für Weinig "PowerMat" Kehlmaschinen
- For Weinig "PowerMat" moulding machines

**Fräsdorn mit zyl. Schaft**  
*Arbor with zyl. shank*

d1	L2	L1	S	Art. Nr.
20	40	98	20x50	<b>495.020.040</b>
	40	108	25x60	<b>495.020.240</b>
20	70	128	20x50	<b>495.020.070</b>
	70	138	25x60	<b>495.020.170</b>
30	40	98	20x50	<b>495.030.040</b>
		108	25x60	<b>495.030.240</b>

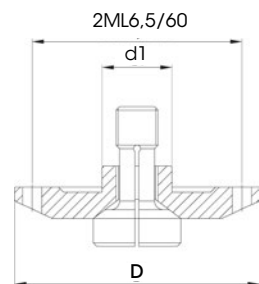
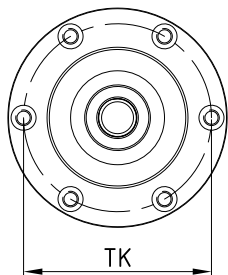
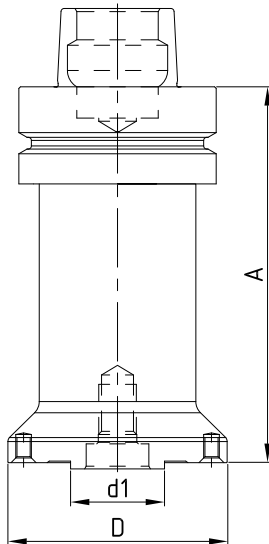
**Fräsdorn für Sägen und Nuter**  
*Arbor for saws and groovers*

d1	L2	L1	S	Art. Nr.	
22	4	69	36	25x60	<b>495.022.004</b>
30	4	69	48	25x60	<b>495.030.004</b>

**Zubehör**  
*Attachment*

Dim.	Art. Nr.	
Schraube - Screw	M6x16 (DIN7991)	<b>705.350</b>
Sechskantschlüssel - T Wrench	SW3	<b>706.103</b>





- Weitere Größen auf Anfrage
- Further dimensions on inquiry

**HSK Sägeblattaufnahme Monoblock**  
 HSK Sawarbor monobloc

d1	D	A	TK/ML	S	Art. Nr.
30/20	70	45	6/M5/60	HSK63F	<b>47.300</b>
	70	110	6/M5/60	HSK63F	<b>47.400</b>
	70	150	6/M5/60	HSK63F	<b>47.500</b>
30/20	160	40	8/M5/90	HSK63F	① <b>47.106.010</b>
	160	50	8/M5/90	HSK63F	① <b>47.106.014</b>
30/20	70	45	6/M5/60	HSK63E	<b>47.350</b>
	70	110	6/M5/60	HSK63E	<b>47.450</b>
	70	150	6/M5/60	HSK63E	<b>47.550</b>

- ① Sägeblattaufnahme Homag Drive 5c/+
- ① Sawarbor for Homag Drive 5c/+

- Auslieferung erfolgt mit 6 Senkkopfschrauben für Sägenbefestigung / "über Mitte Schnitt"
- Supplied with 6 counter-sunk screws for sawmounting / center cut

**Gegenflansch für Sägenaufnahme**  
 Counterflange for sawarbor

d1	D	TK/ML	Typ	Art. Nr.
20	70	2/6,5/60	Schraube DIN912 SW=10	<b>36.070.010</b>
	70	2/6,5/60	EF-Schnellwechsel Typ 3/4 M12 Sw=3	<b>36.070.020</b>
	106	8/5,5/90		<b>34.106.020</b>

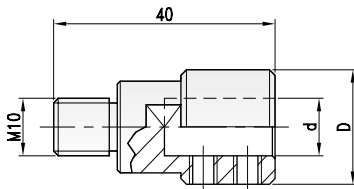
- Art. 36.070.010 Gegenflansch mit Standard Schraube DIN912
- Art. 36.070.020 Gegenflansch mit EF-Einschraubspanner für Sägenschnellwechsel
- Art. 36.070.010 Counterflange with standard screw DIN912
- Art. 36.070.020 Counterflange with EF-Screw-in clamp for quickchange of blades





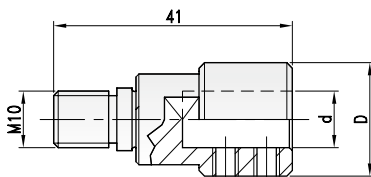
**Zur Reinigung von Spindelnasen, Adaptern und Vorsatzflanschen**  
*For cleaning spindle noses, adapters and extension flanges*

D	HSK	Art. Nr.
63	HSK63F	91.063.050
63	HSK63E	91.063.063
80	HSK80WS	91.080.063
80	HSK80E	91.080.080



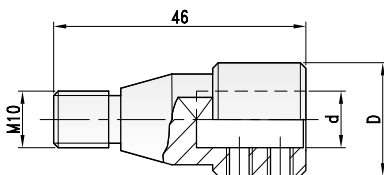
**M10 - ohne Passsitz**  
*M10 - without seating*

D	d	Art. Nr. RH	Art. Nr. LH
Ayen, Holzma, Mayer, Knoevenagel, Torwegge, etc.			
20	10	478.020.010	478.020.110



**M10 - mit Passsitz 11**  
*M10 - with seating 11*

D	d	Art. Nr. RH	Art. Nr. LH
Morbidelli, Weeke, Torwegge, Biesse, Masterwood, Vitap, etc.			
20	10	478.020.210	478.020.310



**M8 - mit Passsitz 9**  
*M8 - with seating 9*

D	d	Art. Nr. RH	Art. Nr. LH
Biesse, SCM, CMS, Morbidelli, etc.			
20	10	478.020.410	478.020.510

**M10 - mit Kegel**  
*M10 - with cone*

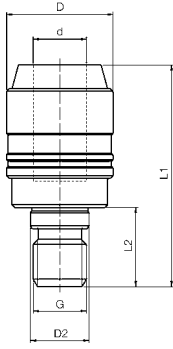
D	d	Art. Nr. RH	Art. Nr. LH
Bilek, Vitap, Alberti, Balestrini, Schleicher, Busellato, etc.			
20	10	478.020.610	478.020.710

**Zubehör**  
*Attachment*

	Dim	Art. Nr.
Verstellschraube - Screw	M5x5	705.102
Sechskantschlüssel - Wrench	SW2,5	706.152

611

## SSA-Selbstspannaufnahme SSA-Quick-change-adapter



Spannfläche am Bohrer  
Clamping surface on drill



**Für Schäfte Ø10 mit Spannfläche**  
For shank Ø10 and machined flat

PG  
02

D1	d	L2	L1	D2	G Rotation	Art. Nr.
20	10	15	42	9	M8RH	611.010.008
20	10	15	42	9	M8LH	611.010.108
20	10	18	45	10	RH	611.010.018
20	10	18	45	10	LH	611.010.118
20	10	15	42	11	M10RH	611.010.010
20	10	15	42	11	M10LH	611.010.110

- Schnellwechselsystem für Dübelbohrer mit Schaft Ø 10mm und Spannfläche.
- Schiebehülse zurückschieben. Bohrer einstecken.
- Schubhülse spannt automatisch, wenn Schaftspannfläche auf Spankeil gedreht wird.
- *Quickchange for dowel drills with shank 10mm and machined flat.*
- *Push down the bushing and insert the tool shank up to the stop.*
- *By turning the toolshaft, the mechanism clamps the toolshank automatically.*

### Ersatzteile / Zubehör

Spare parts / Accessories

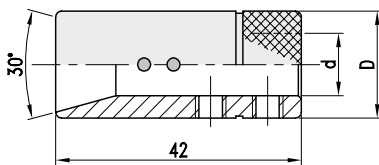
PG  
01

Art. Nr.	
Bohrfutter-Montageschlüssel d=10 - Holder mounting key	611.107.010
Bohrfutter-Verschlusskappe d=10 - Holder mounting cap	611.115.010
Einstellschraube M5x10 - Adjusting screw	705.103

474

## Schnell-Wechsel-Adapter Quick-change-adapter

PG  
02



**Schnellwechsel-Adapter**  
Quick-change adapter

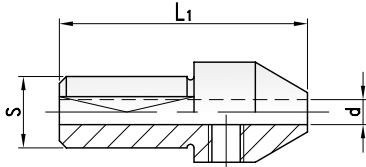
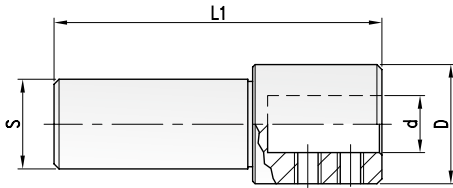
D	d	Art. Nr.
Vitap		
18	10	474.018.010

### Zubehör

Attachment

Dim.	Art. Nr.	
Verstellschraube - Screw	M5x4	705.102.04
Sechskantschlüssel - Wrench	SW2,5	706.152




**Reduzierungen**  
*Reducers*

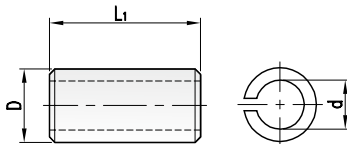
D	d	S	Art. Nr.
20	6	18	495.020.006
20	8	18	495.020.008
22	10	18	495.022.010
22	12	18	495.022.012

**Reduzierungen**  
*Reducers*

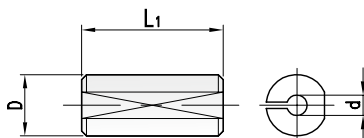
d	L1	S	Art. Nr.
2,0	38	10	495.002.038
2,5	38	10	495.003.038
3,0	38	10	495.003.138
3,5	38	10	495.004.038
4,0	38	10	495.004.138
4,5	38	10	495.005.038
5,0	38	10	495.005.138

**Zubehör**  
*Attachment*

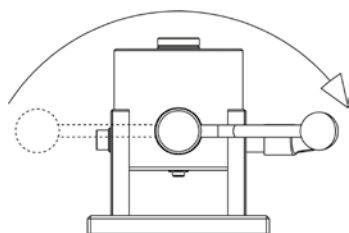
	Dim.	Art. Nr.
Verstellschraube - <i>Screw</i>	M5x5	705.102
Sechskantschlüssel - <i>Wrench</i>	SW2,5	706.152


**Reduzierungen**  
*Reducers*

d	L1	D	Art. Nr.
6	25	8	494.006.025
8	25	10	494.008.025
6	25	12	494.006.125
8	25		494.008.125
10	25		494.010.025

**Reduzierungen**  
*Reducers*


d	L1	D	Art. Nr.
2,0	23	10	494.002.023
2,5	23	10	494.003.023
3,0	23	10	494.003.123
3,5	23	10	494.004.023
4,0	23	10	494.004.123
4,5	23	10	494.005.023
5,0	23	10	494.005.123
6,0	23	10	494.006.023
7,0	23	10	494.007.023
8,0	23	10	493.008.023


**HSK-Montagevorrichtung**  
*Mounting device for HSK*

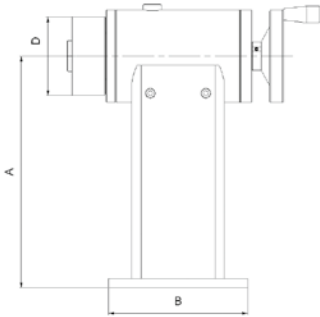
HSK	L	H	D	Art. Nr.
HSK32	100	87,5	40	<b>38.032.035</b>
HSK40	100	87,5	40	<b>38.040.035</b>
HSK63F	100	110	63	<b>38.063.050</b>
HSK63	100	110	63	<b>38.063.063</b>
HSK80WS (Weinig - PowerLock)	100	110	85	<b>38.085.063</b>
HSK80	200	140	100	<b>38.080.080</b>
HSK100	200	200	125	<b>38.100.100</b>

- Praktische, schwenkbare Montagevorrichtung. Werkzeugloses Einspannen bzw. Lösen der HSK-Werkzeuge durch leicht bedienbaren Drehgriff.
- *Practical, swivellable HSK-mounting device. Toolless clamping or releasing of the HSK-tool by easily operable rotary handle.*


**Montagevorrichtung für BT/ISO/SK**  
*Mounting device for BT/ISO/SK*

BT/ISO/SK	D	Art. Nr.
ISO30, BT30	46	<b>438.030.046</b>
SK30, HSK50, C5	50	<b>438.030.050</b>
BT35	53	<b>438.035.053</b>
SK40/HSK63, BT40, C6	63	<b>438.040.063</b>
HSK80WS	85	<b>438.080.085</b>
HSK100, BT50	102	<b>438.050.100</b>
SK50	97,5	<b>438.050.098</b>

- Montagevorrichtung mit Rollen zum sicheren Klemmen von Werkzeugaufnahmen. Selbstklemmend und passend zu SK, ISO, HSK, BT und Capto-Aufnahmen.
- *Mounting device for draw-in collet chuck and arbors ISO/SK by simple exchanging of the clamping jaw.*


**Montagestand für HSK85WS Werkzeuge**  
*Assembly spindle for HSK tools*

HSK	A	D	B	Art. Nr.
HSK85WS-Messspindel	250	85	150	<b>835.250.015</b>

- Montagestand für HSK85WS Werkzeuge. Gelagerte HSK85WS Spindel mit Spannsystem. Verwendung z.B. zum Vermessen des Rundlaufs (über zusätzliche Messvorrichtung) oder Montage bzw. Demontage von Messern oder Fräsern.
- *Assembly stand for HSK85WS tools. Turnable ball bearing spindle with clamping system. For setting of HSK85WS tools, mounting of knives or cutters, or to measure runout (with additional device).*



01



02



03



04



05



06



07



08



09



10



11



